




WILSON&ASSOCIATES, P.C.

Aerial Mapping.

Better and Faster survey data through leading Aerial Mapping technology.





Over the last few years, the field of Land Surveying Industry has advanced faster than most other fields. There is still need for the surveying we all know of, collecting data with a pole, the industry is changing and has provided builders options never before imagined.

Our newest technology is more accurate, insightful, and processes much faster. This has allowed surveyors to better provide higher quality data faster, saving both time and money.

Smarter data produces smarter decision making, meaning that whatever the challenges you are facing, transforming data into actionable information is the answer. Wilson & Associates is structured to solve complex problems and maximize the application of smarter data.

Our clients deserve a partner that provides cutting edge technology now and in the future. Allow us to invest into the next generation of data collection so you can focus on growing your business.

Wilson & Associates Engineering and Surveying, P.C.

The LiDAR Evolution

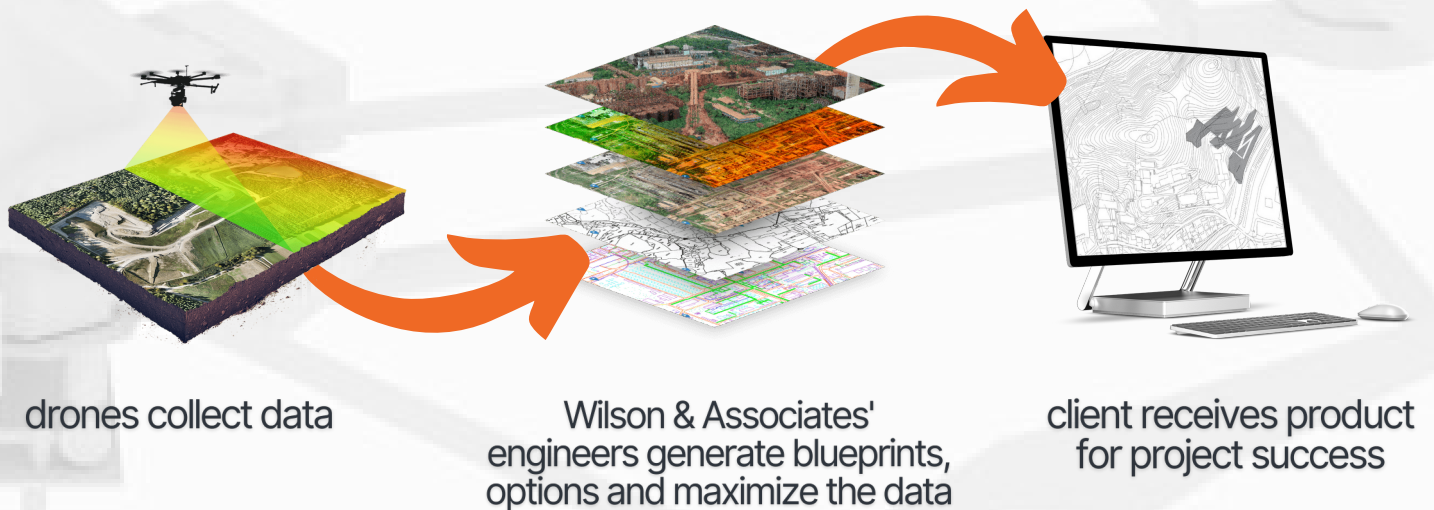
Utilizing LiDAR (Light Detection and Ranging), Wilson & Associates can collect millions of 3D data points in real time to collect high-quality, accurate models of each project.

With this industry leading technology, we have many ways to collect any terrain your project may call for. This can be Aerial LiDAR to map large areas of land. Our mobile LiDAR units collect data at highway speeds. With Hydrographic units allow us to capture rivers, lakes, streams and harbors. Static LiDAR collection gives objects precise geospatial location to create design-quality surveys and densified point cloud data.

All of this allows for better, faster and much more efficient information.



How drone surveying works.





Aerial LiDAR goes beyond others

LiDAR can be used on unmanned aerial vehicles (UAV) to collect a larger data set. With our Aerial UAV fleet we have the ability to capture hundreds of acres at a time. Aerial LiDAR UAV mapping now makes surveying a possibility where it would have been extremely difficult or impossible in the past.

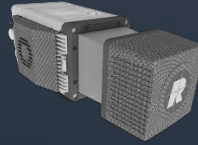
Wilson & Associates has been actively working in Aerial UAV Photogrammetry since 2014. The first company in the industry to obtain an F33 exemption in the state of Tennessee, W&A has four FAA Section-107 pilots who operate our four UAVs throughout the Southeast. We have flown hundreds of lane-miles of roadway projects for original ground and volume calculations, hundreds of stock piles for quarries and asphalt plants, and many sites for predesign information.

Our QA/QC process insures accurate topographic information is delivered to our clients on time and within budget. Our field tests, utilizing terrestrial-based LIDAR compared to Aerial UAV Photogrammetry, indicate the accuracy in volume of the UAV data to be within one to five percent of the terrestrial LIDAR.

Combining Mobile LiDAR and Aerial data collection quickly and accurately gathers information to creates options and a complete frame work of your project.



Leading the way in Aerial Mapping



Riegl miniVUX-3UAV

The RIEGL miniVUX-3UAV is an extremely lightweight airborne laser scanner, designed specifically for integration with UAS/UAV/RPAS.



Riegl miniVUX-1DL

The new RIEGL miniVUX-1DL is a sister device to the miniature UAV laser scanner RIEGL miniVUX-1UAV. The added indicator "DL" means "downward-looking"



Drones

Wilson & Associates uses a group of M600 Pros carrying two different types of Riegl units.



Mobile Mapping Unit Ford Transit

Wilson & Associates Mobile Mapping Unit insures each aerial scanning team carries all the tools needed to complete our clients' tasks.

"With Wilson & Associates' industry-leading drone mapping capabilities, the sky is the limit for you and your project."

-Eric Jager,
Senior LIDAR Surveyor



We can help you!

For over 50 years, Wilson & Associates is a leader in implementing technology in the Land Surveying Industry. Our experience and industry veteran staff allows us to supply real value to our clients, ensuring the highest quality data, collected safely in less time, and frequently at a more cost-effective price for our clients.

To learn more about using the most cutting-edge geospatial technologies to save you both time and money, or to simply speak with Wilson & Associates leaders, please contact:



Justin Wilson
Executive Vice President/CCO

quotes@wilsonpc.com

Wilson & Associates has a culture of strategically investing into state-of-the art software and equipment. We continually assess and incorporate new technologies to ensure our clients' have available to them the cutting edge in surveying technology for completing projects accurately and in the most efficient manner.

Our culture is one of dedication, not being afraid to try new things and hard work. We are dedicated to safety by utilizing industry leading approaches and technologies to minimize all errors, supply the most complete and accurate results, and to ensure the safest work environment for all staff.

By our implementation of portfolio technologies, perpetual training, and self-auditing, we are always prepared for efficient data collection to keep all staff safe.

A photograph of two men in an office setting. They are standing over a large table, looking down at a large sheet of paper, likely a blueprint or technical drawing. The man on the right is wearing a dark blue polo shirt with a white 'WA' logo on the chest and blue jeans. He is pointing at a specific area on the document. The man on the left is wearing a light blue and white checkered button-down shirt. The background is a plain, light-colored wall. A semi-transparent grey box is overlaid on the center of the image, containing contact information.

Our Office
615.794.2275
wilsonpc.com



Uncompromised
Engineering & Surveying

Wilson & Associates Engineering and Surveying
www.wilsonpc.com